

HONGPU GONIOPHOTOMETERS SYSTEM TEST REPORT

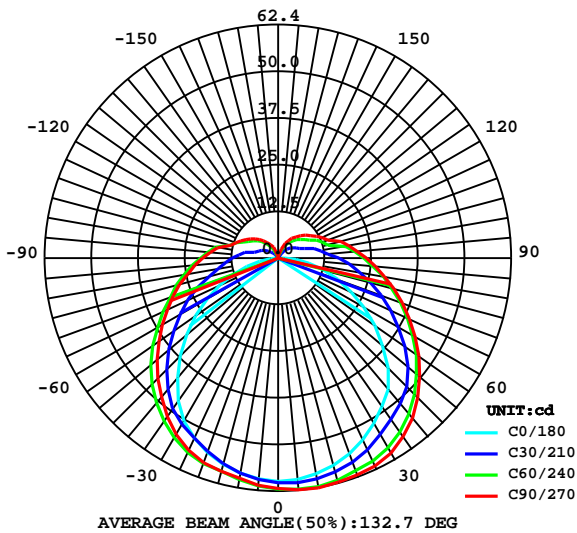
LUMINAIRE PHOTOMETRIC TEST REPORT

Report number: PX48-SR-RGB-SO-F

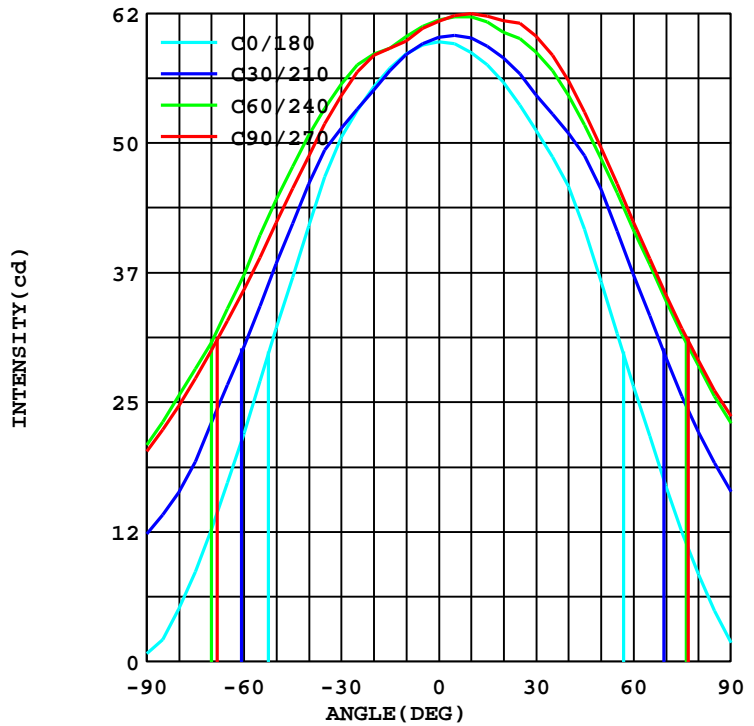
MANUFACTURER:		Address:		
NAME: PX48-SR-RGB-SO-F		TYPE:Plexineon RGB	WEIGHT:N/A	
SPECIFICATION:17-LLSRGB36-CLR		DIMENSION: .12X4X.033	SERIAL No.:N/A	

DATA OF LAMP		Imax(cd)	62.44	S/MH(C0/180)	1.25
MODEL		EFFICIENCY(%)	100.0	S/MH(C90/270)	1.31
NOMINAL POWER(W)	16	TOTAL FLUX(lm)	272.00	Voltage(V)	24.00
RATED VOLTAGE(V)	24	EFFICIENCY(lm/W)	16.5	Current(A)	0.686
NOMINAL FLUX(lm)	272.0	η up(%)	16.5	Power(W)	16.49
LAMPS QUANTITY	1	η down(%)	83.5	Power Factor(PF)	1.000
TEST VOLTAGE(V)	24.0	Effictive Flux(lm)	264.7	E EI	0.604

LUMINOUS INTENSITY DISTRIBUTION



LUMINOUS INTENSITY DISTRIBUTION



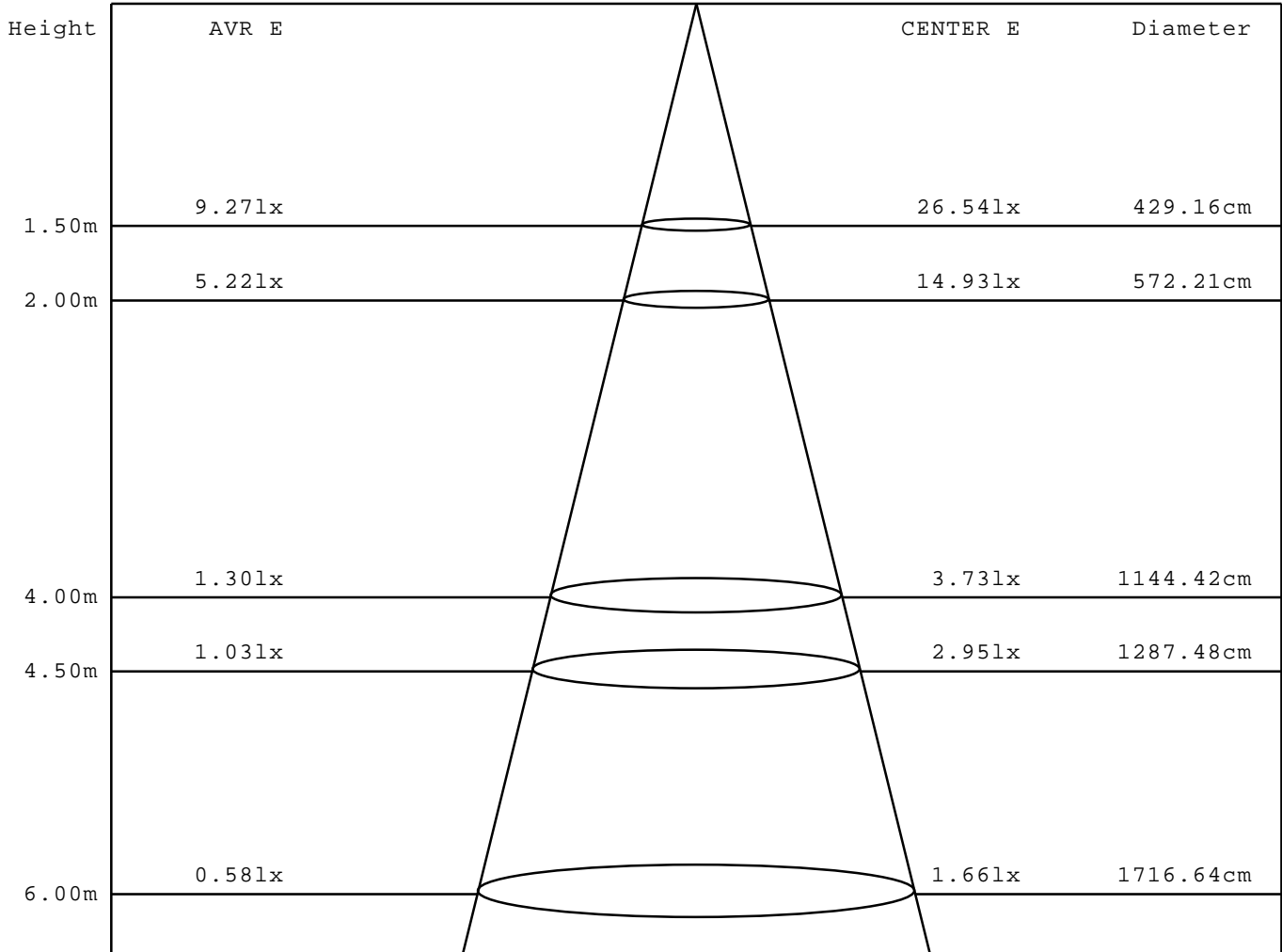
Test System:HOPOO
 Temperature:25.3DEG
 Operators:
 Test Date:02-15-2023

Test Set: 5.0deg/s C-Gamma (TYPE C)
 Humidity:65.0%
 Test Distance:8.367 m
 Remarks: PX48-SR-RGB-SO-F

AVERAGE AND CENTER E Figure

Report number: PX48-SR-RGB-SO-F

MANUFACTURER:	Address:	
NAME: PX48-SR-RGB-SO-F	TYPE:Plexineon RGB	WEIGHT:N/A
SPECIFICATION:17-LLSRGB36-CLR	DIMENSION: .12X4X.033	SERIAL No.:N/A



Angle:110.1deg

Test System:HOPOO
 Temperature:25.3DEG
 Operators:
 Test Date:02-15-2023

Test Set: 5.0deg/s C-Gamma (TYPE C)
 Humidity:65.0%
 Test Distance:8.367 m
 Remarks: PX48-SR-RGB-SO-F

HONGPU GONIOPHOTOMETERS SYSTEM TEST REPORT

ZONAL FLUX DIAGRAM

Report number: PX48-SR-RGB-SO-F

MANUFACTURER:	Address:	
NAME: PX48-SR-RGB-SO-F	TYPE:Plexineon RGB	WEIGHT:N/A
SPECIFICATION:17-LLSRGB36-CLR	DIMENSION: .12X4X.033	SERIAL No.:N/A

γ	C0	C45	C90	C135	C180	C225	C270	C315	γ	ϕ zone	ϕ total
10.0	58.52	59.33	59.78	58.03	58.66	61.08	62.44	58.56	0- 10	5.712	5.712
20.0	55.37	56.81	58.38	56.21	55.79	59.40	61.74	56.74	10- 20	16.56	22.27
30.0	50.54	53.52	54.53	53.48	51.17	56.67	60.27	54.11	20- 30	25.90	48.17
40.0	41.93	48.33	48.65	48.68	45.78	52.71	55.93	50.29	30- 40	32.60	80.77
50.0	32.06	41.37	42.28	42.24	36.61	46.93	49.49	43.96	40- 50	35.57	116.3
60.0	21.98	33.81	35.84	35.03	26.60	39.48	42.35	36.64	50- 60	34.58	150.9
70.0	12.74	26.88	29.96	28.31	16.94	32.06	35.35	29.40	60- 70	30.75	181.6
80.0	5.110	20.96	24.64	22.47	8.400	25.30	28.98	23.03	70- 80	25.42	207.1
90.0	0.770	16.59	20.23	17.18	1.820	19.67	23.66	17.95	80- 90	19.88	226.9
100.0	0.560	13.12	16.66	13.30	0	15.08	19.39	14.14	90-100	15.22	242.2
110.0	0.420	8.820	12.18	8.715	0	10.11	14.35	9.555	100-110	10.74	252.9
120.0	0.420	6.685	10.01	6.720	0	7.735	11.90	7.490	110-120	7.483	260.4
130.0	0.210	4.935	8.050	5.250	0.070	6.090	9.660	5.670	120-130	5.287	265.7
140.0	0.210	3.325	6.160	3.920	0.070	4.655	7.490	4.200	130-140	3.495	269.2
150.0	0.140	1.610	4.270	2.345	0.140	2.450	5.530	2.135	140-150	1.898	271.1
160.0	0.210	0.210	0.980	0.315	0.210	0.770	2.730	0.770	150-160	0.741	271.8
170.0	0.210	0.175	0.070	0.175	0.280	0.175	0.420	0.140	160-170	0.117	271.9
180.0	0.210	0.175	0.140	0.175	0.280	0.140	0.350	0.105	170-180	0.017	272.0
DEG	LUMINOUS INTENSITY:cd									UNIT:lm	

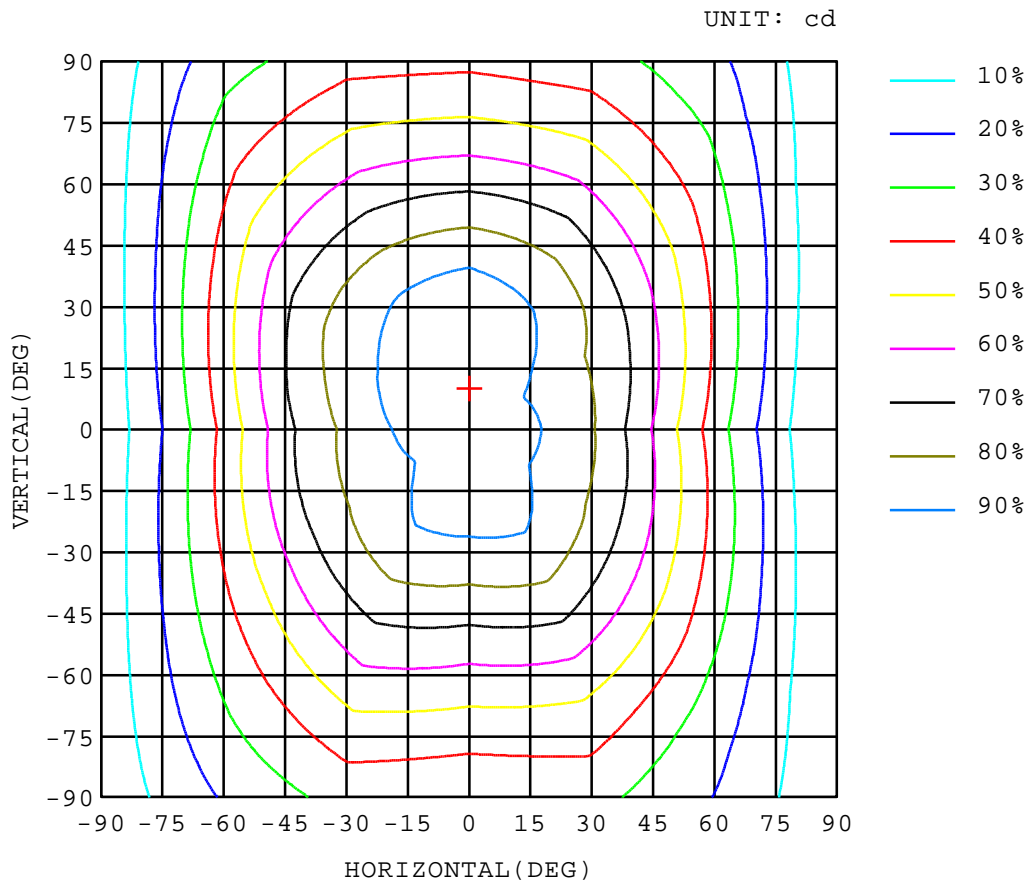
Test System:HOPOO
 Temperature:25.3DEG
 Operators:
 Test Date:02-15-2023

Test Set: 5.0deg/s C-Gamma (TYPE C)
 Humidity:65.0%
 Test Distance:8.367 m
 Remarks: PX48-SR-RGB-SO-F

ISOCANDELA DIAGRAM

Report number: PX48-SR-RGB-SO-F

MANUFACTURER:	Address:	
NAME: PX48-SR-RGB-SO-F	TYPE:Plexineon RGB	WEIGHT:N/A
SPECIFICATION:17-LLSRGB36-CLR	DIMENSION: .12X4X.033	SERIAL No.:N/A



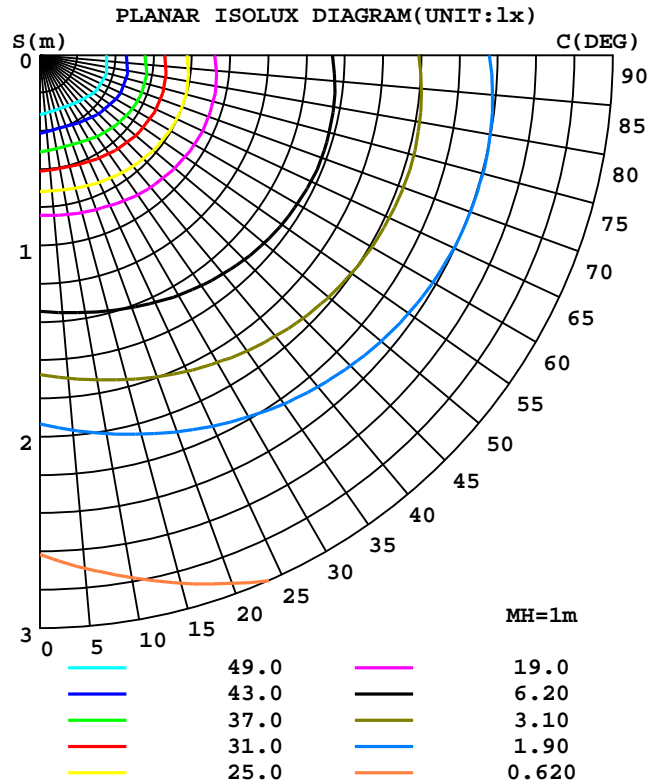
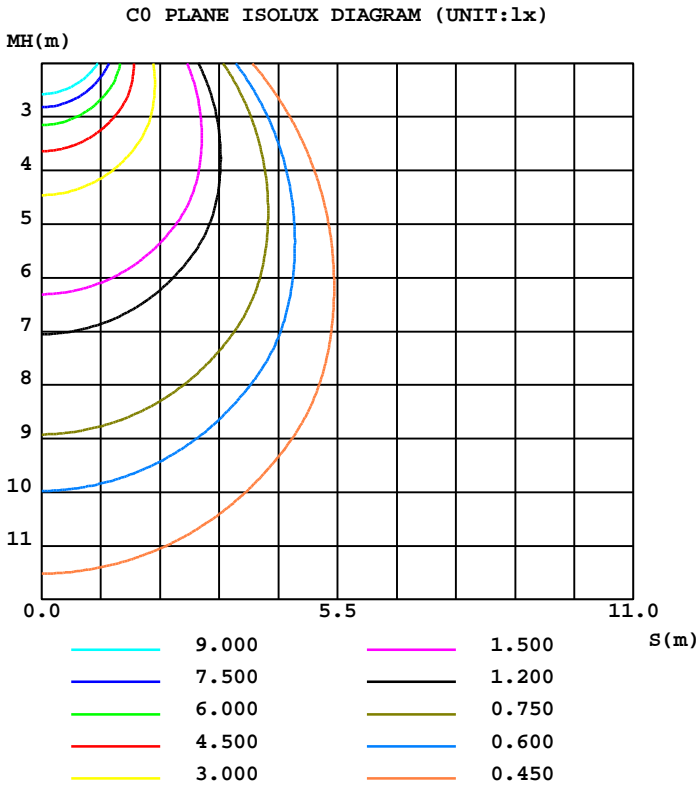
Test System:HOPOO
 Temperature:25.3DEG
 Operators:
 Test Date:02-15-2023

Test Set: 5.0deg/s C-Gamma (TYPE C)
 Humidity:65.0%
 Test Distance:8.367 m
 Remarks: PX48-SR-RGB-SO-F

ISOLUX DIAGRAM

Report number: PX48-SR-RGB-SO-F

MANUFACTURER:	Address:	
NAME: PX48-SR-RGB-SO-F	TYPE:Plexineon RGB	WEIGHT:N/A
SPECIFICATION:17-LLSRGB36-CLR	DIMENSION: .12X4X.033	SERIAL No.:N/A



Test System:HOPOO
 Temperature:25.3DEG
 Operators:
 Test Date:02-15-2023

Test Set: 5.0deg/s C-Gamma (TYPE C)
 Humidity:65.0%
 Test Distance:8.367 m
 Remarks: PX48-SR-RGB-SO-F

HONGPU GONIOPHOTOMETERS SYSTEM TEST REPORT

LUMINOUS DISTRIBUTION INTENSITY DATA

Report number: PX48-SR-RGB-SO-F

MANUFACTURER:	Address:	
NAME: PX48-SR-RGB-SO-F	TYPE:Plexineon RGB	WEIGHT:N/A
SPECIFICATION:17-LLSRGB36-CLR	DIMENSION: .12X4X.033	SERIAL No.:N/A

UNIT: cd

C(DEG)\ γ (DEG)	0	30	60	90	120	150	180	210	240	270	300	330
0.0	59.7	60.1	61.8	61.6	59.7	58.1	59.7	60.1	61.8	61.6	59.7	58.1
5.0	59.3	59.5	61.1	60.9	59.3	57.9	59.5	60.3	62.0	62.2	59.9	57.8
10.0	58.5	58.4	60.2	59.7	58.6	57.4	58.6	60.0	62.0	62.4	59.7	57.3
15.0	57.1	56.9	59.0	59.0	57.8	56.2	57.4	59.2	61.6	62.1	59.3	56.2
20.0	55.3	55.0	58.5	58.3	57.5	54.8	55.7	58.1	60.6	61.7	58.5	54.9
25.0	53.1	53.2	57.4	56.7	56.7	53.4	53.6	56.6	59.9	61.4	58.1	53.3
30.0	50.5	51.3	55.6	54.5	55.2	51.7	51.1	54.6	58.7	60.2	57.1	51.1
35.0	46.6	49.2	53.2	51.8	53.0	49.7	48.5	52.7	56.9	58.3	55.4	49.2
40.0	41.9	45.9	50.6	48.6	50.4	46.9	45.7	50.8	54.5	55.9	53.2	47.3
45.0	37.0	42.2	47.6	45.5	47.4	43.6	41.6	48.7	51.6	52.9	50.4	44.2
50.0	32.0	38.2	44.4	42.2	44.5	39.9	36.6	45.4	48.4	49.4	47.3	40.5
55.0	27.0	34.2	41.0	38.9	41.5	35.7	31.5	41.4	45.1	45.9	44.1	36.6
60.0	21.9	30.3	37.2	35.8	38.3	31.7	26.6	37.3	41.6	42.3	40.4	32.8
65.0	17.2	26.6	34.0	32.8	35.2	28.0	21.7	33.3	38.2	38.7	36.8	29.0
70.0	12.7	23.0	30.7	29.9	32.1	24.5	16.9	29.3	34.7	35.3	33.3	25.4
75.0	8.68	19.2	28.2	27.3	29.1	21.3	12.4	25.5	31.5	32.0	30.0	22.0
80.0	5.11	16.3	25.6	24.6	26.3	18.5	8.40	22.1	28.4	28.9	27.0	19.0
85.0	2.10	14.1	23.1	22.3	23.7	15.8	4.90	19.1	25.5	26.1	24.2	16.3
90.0	0.77	12.3	20.8	20.2	21.2	13.0	1.82	16.3	22.9	23.6	21.7	14.2
95.0	0.63	10.6	18.9	18.3	19.1	11.0	0.00	13.5	20.6	21.4	19.5	12.3
100.0	0.56	9.17	17.0	16.6	17.1	9.45	0.00	11.6	18.4	19.3	17.5	10.7
105.0	0.56	6.58	13.4	13.2	13.0	7.84	0.00	10.0	13.8	17.5	13.6	9.10
110.0	0.42	5.53	12.1	12.1	11.9	5.53	0.00	7.63	12.6	14.3	12.3	6.79
115.0	0.49	4.97	10.5	11.0	10.5	4.83	0.00	6.23	11.3	13.0	11.0	6.16
120.0	0.42	4.27	9.10	10.0	9.17	4.27	0.00	5.67	9.80	11.9	9.59	5.39
125.0	0.28	3.43	8.19	9.03	8.19	3.64	0.07	4.90	8.82	10.7	8.47	4.69
130.0	0.21	2.66	7.21	8.05	7.35	3.15	0.07	4.34	7.84	9.66	7.56	3.78
135.0	0.21	2.10	6.37	7.07	6.51	2.66	0.07	3.57	7.07	8.61	6.65	3.08
140.0	0.21	1.40	5.25	6.16	5.67	2.17	0.07	3.08	6.23	7.49	5.74	2.66
145.0	0.21	0.77	3.99	5.18	4.90	0.28	0.07	1.54	5.39	6.51	4.62	1.82
150.0	0.14	0.21	3.01	4.27	3.99	0.70	0.14	0.56	4.34	5.53	3.50	0.77
155.0	0.14	0.14	1.68	3.22	2.59	0.00	0.21	0.84	3.29	4.48	2.59	0.63
160.0	0.21	0.00	0.42	0.98	0.63	0.00	0.21	0.35	1.19	2.73	1.26	0.28
165.0	0.14	0.00	0.35	0.70	0.35	0.00	0.21	0.28	0.56	0.91	0.42	0.21
170.0	0.21	0.00	0.35	0.07	0.35	0.00	0.28	0.28	0.07	0.42	0.07	0.21
175.0	0.21	0.07	0.28	0.07	0.28	0.00	0.28	0.21	0.00	0.35	0.07	0.14
180.0	0.21	0.07	0.28	0.14	0.28	0.07	0.28	0.21	0.07	0.35	0.07	0.14

Test System:HOPOO
 Temperature:25.3DEG
 Operators:
 Test Date:02-15-2023

Test Set: 5.0deg/s C-Gamma (TYPE C)
 Humidity:65.0%
 Test Distance:8.367 m
 Remarks: PX48-SR-RGB-SO-F