

Stucchi OneTrack System

for Senso track fixtures

TRACK INFORMATION

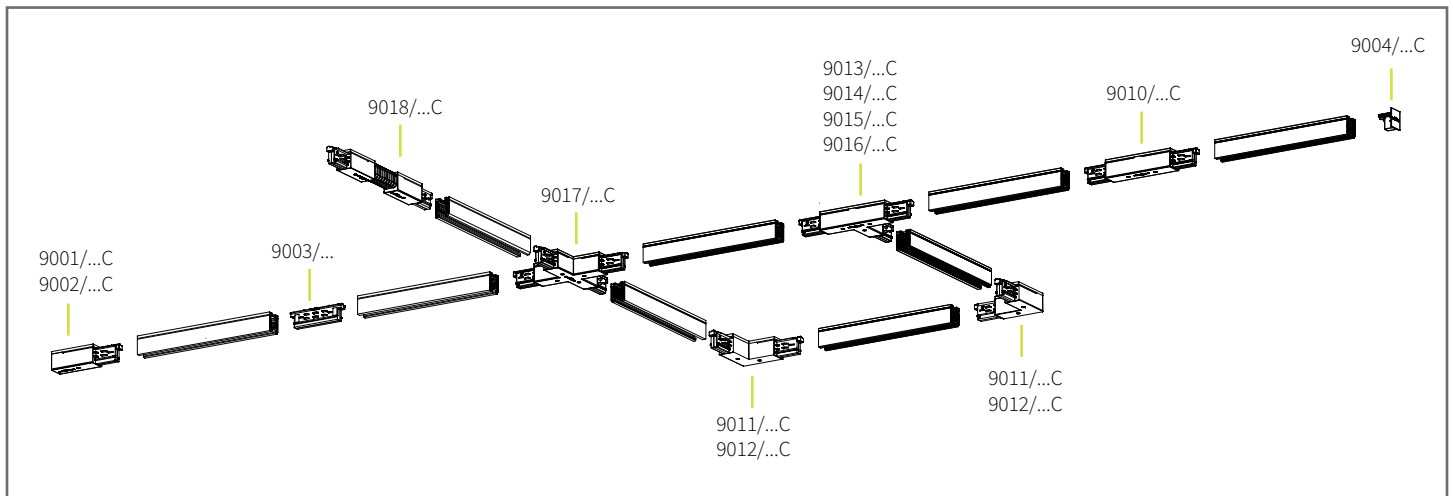
Colors Available Throughout This Document

W White
RAL 9010

B Black
RAL 9005

R Raw
Aluminum

Track System Examples

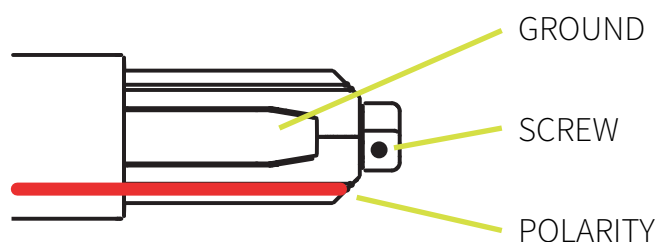


All the described operations of this instructions page must be performed by qualified personnel only. Disconnect power during installation or servicing. Please respect national and local installation regulations. A.A.G. Stucchi allows the use of A.A.G. Stucchi parts only in applications where the ONETRACK® system is used. These parts must be installed according to the installation instructions. The company as a manufacturer is not responsible for the safety and functionality of the system if parts not belonging to it are used or if there are any deviations from the installation instructions. It is then the user's responsibility to ensure the electrical, mechanical and thermal compatibility between the system and the fixtures used with it. The track, its components and also the adapters can't be used with accessories without the appropriate approvals. On A.A.G. Stucchi track one can use only A.A.G. Stucchi connections. A.A.G. Stucchi connections can be used only with A.A.G. Stucchi tracks. The track is to be connected to electrical power by means of the A.A.G. Stucchi articles 9001/.. and 9002/...

It is strictly forbidden to use any kind of solvent, glue, oil, grease or cleaner in contact with ONETRACK® components. The company is not responsible of any damage caused by the use of the materials mentioned above.

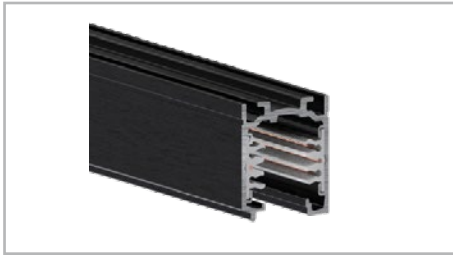
Mechanical Keys

There a mechanical key on the track to guarantee the proper connection of multiple pieces of track. This key is present on all end-feeds and connecting components (see screw below-pictured). Care must be taken when ordering to select the correct components. The catalog drawing depict the position of the key with a red line.



TRACK OPTIONS

120V RECTANGLE

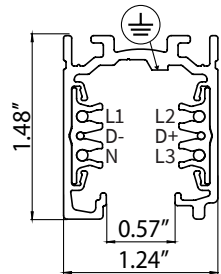


For 3 Circuit

9000-UL-.../B-ST-120
9000-UL-.../W-ST-120

W

B

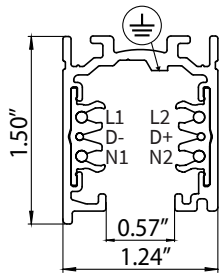


For 2 Circuit

9000-UL-.../B-ST2-120
9000-UL-.../W-ST2-120

W

B



277V RECTANGLE

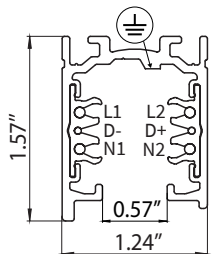


For 2 Circuit

9000-UL-.../B-ST3-277
9000-UL-.../W-ST3-277

W

B

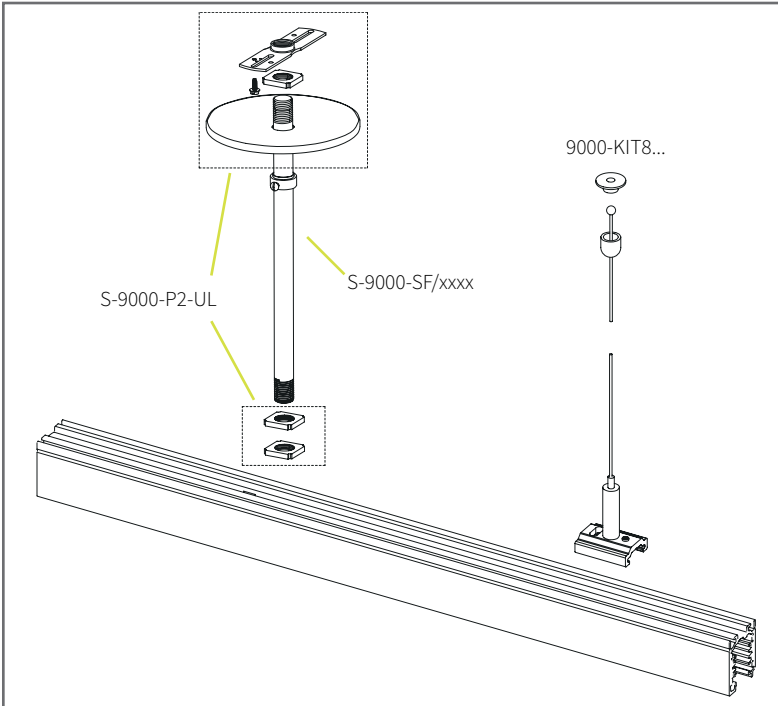


Order Code Sample

Track	Length	Color	Track Type & Voltage
9000-UL	--	--	--
	4ft 8ft 12ft	B W G	ST-120 ST2-120 ST3-120

TRACK MOUNTING

Complete Suspension Kits



Aircraft Cable Suspension Kit

S-9000-P2

Includes:

- clamp with M6 thread gripper
- plastic cover

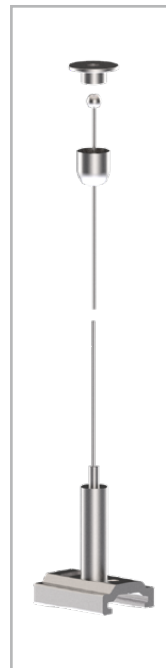


Solid Stem Suspension Kit

S-9000-P2-UL

Includes:

- crossbar
- metal cup
- 3/8 stem (to be ordered separately)
- mounting bracket



Aircraft Cable Suspension Kit

9000-KIT8-1.5 | 1.5m cable length
 9000-KIT8-3 | 3.0m cable length
 9000-KIT8-5 | 5.0m cable length

Includes:

- round head ceiling attachment
- steel cable Ø 1.5mm with spherical end
- bracket with automatic gripper



ACCESSORIES

End Cap



End cap with locking screw

9004/...

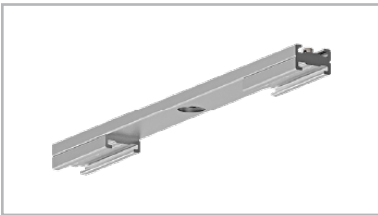


Reinforcing Brackets



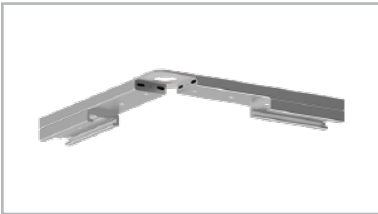
Reinforcing brackets for end feeds

S-9001/SU-...



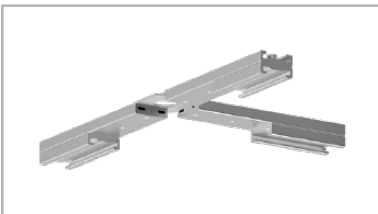
Reinforcing brackets for middle feed

S-9010/SU-...



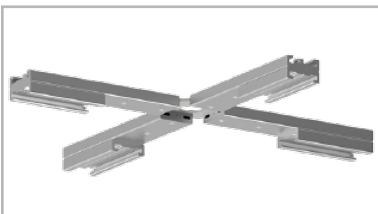
Reinforcing brackets for 'L' feeds

S-9011/SU-...



Reinforcing brackets for 'T' feeds

S-9013/SU-...



Reinforcing brackets for 'X' feeds

S-9017/SU-...



TRACK ADAPTERS

Stucchi ONETRACK® adapters phase selector allows you to maintain the selected phase even though the adapter is attached/detached or re-attached to the track. This gives you the possibility to select the phase before the installation, making it easier.

9209...and 9219 adapters: maximum load 100N. Maximum resistance to bending moment 5Nm.

The following parts are for reference and do not require specifying by the user. Adapters will come pre-configured by Senso according to specified circuit selection.

3 Circuit / 120V



Asymmetric 6 conductors adapter (3 phase + control system)

9209/...

W

B

2 Circuit / 120V



Asymmetric (ON/OFF + control system) adapter

9219-2S/...

W

B

2 Circuit / 277V



Asymmetric (ON/OFF + control system) adapter

9219-2S/...-277

W

B

CONNECTORS

All connections are made of self-extinguishing polycarbonate, glow wire 960°C. Connections are available in all versions that allow the construction of a complete lighting application (internal/external, R/L phase placement as per red line in the singular drawing).

Feeds and Joiners

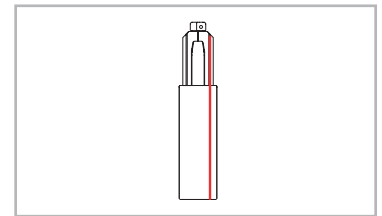


End Feed - Polarity Right

9001/...-2C2 Circuit
 9001/...-2C-2772 Circuit
 9001/...-3C3 Circuit

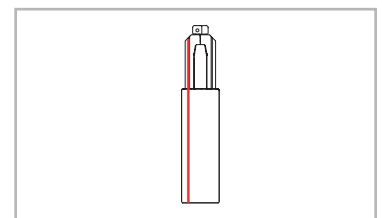


— Polarity Ridge - Bottom View



End Feed - Polarity Left

9002/...-2C2 Circuit
 9002/...-2C-2772 Circuit
 9002/...-3C3 Circuit



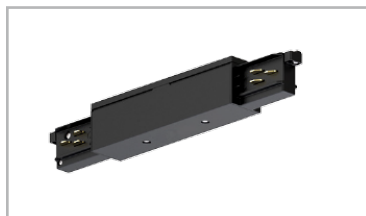
Joining Connector

9003/...



Insulating Connector

9003/...-M



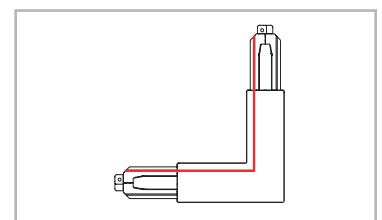
Middle Feed

9010/...-2C*2 Circuit
 9010/...-2C-277*2 Circuit
 9010/...-3C*3 Circuit



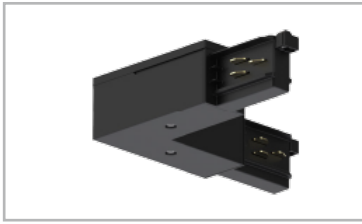
L Feed - Polarity Interior

9011/...-2C*2 Circuit
 9011/...-2C-277*2 Circuit
 9011/...-3C*3 Circuit



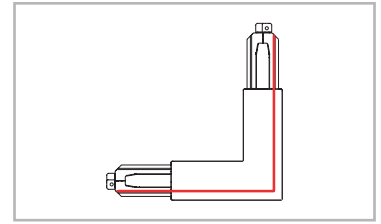
*Available in a NON-wire version

CONNECTORS



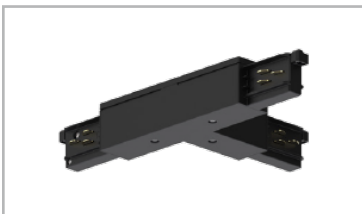
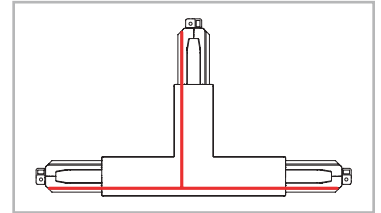
L Feed - Polarity Exterior

9012/...-2C*2 Circuit
 9012/...-2C-277*2 Circuit
 9012/...-3C*3 Circuit



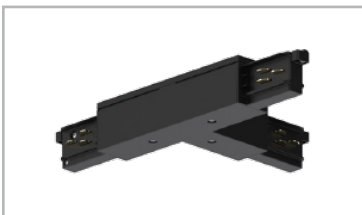
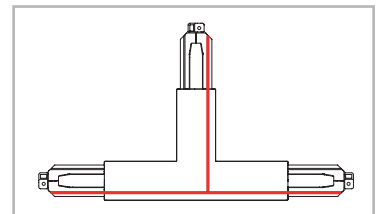
T Feed - Polarity Exterior Left

9013/...-2C*2 Circuit
 9013/...-2C-277*2 Circuit
 9013/...-3C*3 Circuit



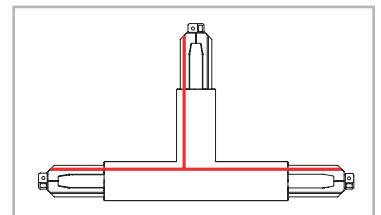
T Feed - Polarity Exterior Right

9014/...-2C*2 Circuit
 9014/...-2C-277*2 Circuit
 9014/...-3C*3 Circuit



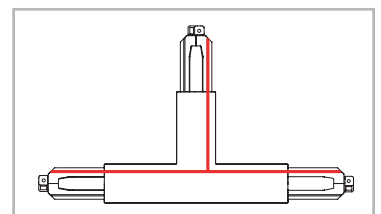
T Feed - Polarity Interior Left

9015/...-2C*2 Circuit
 9015/...-2C-277*2 Circuit
 9015/...-3C*3 Circuit



T Feed - Polarity Interior Right

9016/...-2C*2 Circuit
 9016/...-2C-277*2 Circuit
 9016/...-3C*3 Circuit



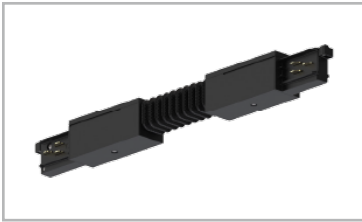
X Feed

9017/...-2C*2 Circuit
 9017/...-2C-277*2 Circuit
 9017/...-3C*3 Circuit



*Available in a NON-wire version

CONNECTORS

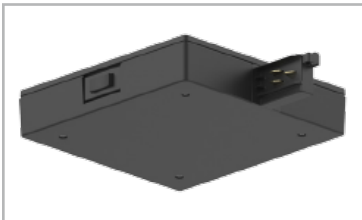


Adjustable Corner

9018/...



Current Limiter



End Feed

9001-CL/...-2C
9002-CL/...-2C

9001-CL/...-2C-277
9002-CL/...-2C-277

9001-CL/...-3C
9002-CL/...-3C

